

2013



CHAMPIONSHIP  
Manual

May 9-11

Ormond Beach Sports Complex  
Ormond Beach, FL

# 2013 Softball Championship

## Table of Contents

MEAC Office/ Bethune-Cookman Staff .....	3
Pre-Championship Teleconference.....	4
Coaches Meeting .....	4
Championship Format/Protocol .....	4-6
Team Practice.....	6
Entries.....	6
Squad Size .....	6
Uniforms .....	6
Awards.....	6
Games Committee.....	6
Media Credentials .....	7
Results.....	7
Post-Championship Interviews .....	7
Sportsmanship.....	7-8
Schedule of Events.....	8-9
Championship Bracket.....	10
Directions to Ormond Beach.....	11
Lodging/Restaurants.....	12

# 2013 Softball Championship

## **Championship Personnel**

Raynoid Dedeaux, Director of Championships      Office: 757-951-2055  
[dedeauxr@themeac.com](mailto:dedeauxr@themeac.com)  
Cell: 757-274-2435

Quintin Wright, Asst. Director of Championships      Office: 757-951-2055  
[wrightq@themeac.com](mailto:wrightq@themeac.com)  
Cell: 757-377-6686

Carl Blair, Supervisor of Softball Umpires      Cell: 321-594-8351  
[cblair1906@yahoo.com](mailto:cblair1906@yahoo.com)

Sahar Abdur-Rashid, Asst. Director of Media Relations      Office: 757-951-2055  
[rashids@themeac.com](mailto:rashids@themeac.com)

## **Bethune-Cookman University Staff**

Lynn Thompson, Director of Athletics      Office: 386-481-2215  
[thompsol@cookman.edu](mailto:thompsol@cookman.edu)

Sandra Booker, Asst. Director of Athletics      Office: 386-481-2212  
[bookers@cookman.edu](mailto:bookers@cookman.edu)

Tony O'Neal, Assoc. Director of Athletics      Office: 386-481-2201  
[onealt@cookman.edu](mailto:onealt@cookman.edu)

Matt Knox, Asst. AD for Marketing & Promotions      Office: 386-481-2033  
[knoxm@cookman.edu](mailto:knoxm@cookman.edu)

Michael Stambaugh, Asst. Director of Sports Information      Office: 386-481-2278  
[stambaughm@cookman.edu](mailto:stambaughm@cookman.edu)

Brian Jansen, Head Athletic Trainer      Office: 386-481-2261  
[jansenb@cookman.edu](mailto:jansenb@cookman.edu)

Chris Cochran, Head Softball Coach      Office: 386-481-2245  
[cochran@cookman.edu](mailto:cochran@cookman.edu)

# 2013 Softball Championship

## **Pre/Post Championship Teleconference**

A teleconference will be held prior to the Championships on April 23, 2013 at 10am to give an overview on championship procedures, rules, and policies. The post championship teleconference will be held on a date that is to be determined. Participation by each head coach is mandatory.

## **Coaches Meeting**

A meeting of the coaches will be held at the Center for Civil Engagement on the campus of Bethune-Cookman University at 5:00pm on Wednesday, May 8, 2013 to review championship procedures, rules and policies. Attendance by each head coach is mandatory.

## **Format**

The MEAC Softball Championship is an eight (8) team championship, with the top four (4) teams from each division qualifying for the championship. The championship is double elimination.

## **Game Protocol**

### **Thursday – May 9**

8:20AM- 8:50AM	Batting Practice (Home teams)
8:55AM- 9:25AM	Batting Practice (Away teams)
9:35AM – 9:45AM fields)	In-Field Practice (both teams on non-competition)
9:35AM – 9:55AM	Field Conditioning
9:55AM – 9:58AM	Introduction of teams/Ground Rules
9:58AM – 10:00AM	National Anthem
10:00AM	Games 1/2
11:50AM-12:20PM	Batting Practice (Home teams)
12:25PM-12:55PM	Batting Practice (Away teams)
1:05PM – 1:15PM fields)	In-Field Practice (both teams on non-competition)
1:05PM – 1:27PM	Field Conditioning
1:27PM – 1:30PM	Introduction of teams/Ground Rules
1:30pm	Games 3/4
2:50PM- 3:20PM	Batting Practice (Home teams)
3:25PM- 3:55PM	Batting Practice (Away teams)
4:05PM – 4:15PM fields)	In-Field Practice (both teams on non-competition)
4:05PM – 4:27PM	Field Conditioning
4:27PM – 4:30PM	Introduction of teams/Ground Rules
4:30pm	Games 5/6

# 2013 Softball Championship

5:20PM- 5:50PM Batting Practice (Home teams)  
5:55PM- 6:25PM Batting Practice (Away teams)  
6:35PM – 6:45PM In-Field Practice (both teams on non-competition  
fields)  
6:35PM – 6:57PM Field Conditioning  
6:57PM – 7:00PM Introduction of teams/Ground Rules  
7:00pm Games 7/8

## Friday – May 10

8:20AM - 8:50AM Batting Practice (Home team)  
8:55AM - 9:25AM Batting Practice (Away team)  
9:35AM – 9:45AM In-Field Practice (both teams on non-competition  
fields)  
9:35AM – 9:55AM Field Conditioning  
9:55AM – 9:58AM Team Introductions/ Ground Rules  
9:58AM – 10:00AM National Anthem  
10:00AM Games 9/10

11:20AM - 11:50AM Batting Practice (Home team)  
11:55AM - 12:25PM Batting Practice (Away team)  
12:35PM – 12:45PM In-Field Practice (both teams on non-competition  
fields)  
12:35PM – 12:57PM Field Conditioning  
12:57AM – 1:00PM Team Introductions/Ground Rules  
1:00PM Game 11

1:20PM - 1:50PM Batting Practice (Home team)  
1:55PM - 2:25PM Batting Practice (Away team)  
2:35PM – 2:45PM In-Field Practice (both teams on non-competition  
fields)  
2:35PM – 2:57PM Field Conditioning  
2:57PM – 3:00PM Team Introductions/Ground Rules  
3:00PM Game 12

4:20PM - 4:50PM Batting Practice (Home team)  
4:55PM - 5:25PM Batting Practice (Away team)  
5:35PM – 5:45PM In-Field Practice (both teams on non-competition  
fields)  
5:35PM – 5:57PM Field Conditioning  
5:57PM – 6:00PM Team Introductions/Ground Rules  
6:00PM Game 13

# 2013 Softball Championship

## **Saturday – May 11**

11:20AM - 11:50AM	Batting Practice (Home team)
11:55AM - 12:25PM	Batting Practice (Away team)
12:35PM – 12:45PM	In-Field Practice
12:45PM – 12:55PM	Field Conditioning
12:55PM – 12:57PM	Introduction of teams/ Ground Rules
12:57PM – 1:00PM	National Anthem
1:00PM	Championship Game

## **Practice**

Practice times will assigned from 10:00am – 2:00pm on May 8 in one hour increments based on distance from Ormond Beach, FL. (Institution closest to Ormond Beach, FL will have earliest time, while institution furthest from Ormond Beach will have latest time.)

## **Entries**

Championship entry forms should be submitted to the MEAC Office by an institutional compliance officer not later than April 12, 2013.

## **Squad Size**

The squad size shall be a maximum of twenty (20) participants.

## **Uniforms**

Uniforms must comply with the NCAA Softball Rules however, for each game in the championship the home team (higher seed) must wear a light colored uniform and the away team (lower seed) must wear a dark colored uniform. The same pattern will be used in the loser's bracket. The higher seed in the loser's bracket will be the home team and wear the lighter colored uniforms and the lower seed in the loser's bracket will be the away team and wear the darker colored uniforms. A coin toss will determine home and away in the case that two teams of identical seed are competing against each other. Each team must inform the conference office of their uniform selection prior to competition.

## **Awards**

Regular season awards for Divisional Champions, All-Conference First Team, Coach-of-the-Year, Rookie of the Year, Pitcher of the Year and Player of the Year will be awarded.

Awards for the Softball Championship are awarded to the champion and runner-up teams and individual awards will be provided for Outstanding Player, Outstanding Coach and All-Tournament Team at the conclusion of championship play.

## **Games Committee/Jury of Appeals**

The games committee/jury of appeals shall consist of the Director of Championships, Head Official, Co-Chairs of the Softball Championships, and President of the Softball Coaches Association. The decision of the Games Committee/Jury of Appeals is final.

# 2013 Softball Championship

## **Media**

**Credentials:** Credential applications will be available online via the conference website at [www.MEACsports.com](http://www.MEACsports.com). To receive additional information regarding the application process, contact Sahar Rashid at 757-951-2055 (office) or [rashids@themeac.com](mailto:rashids@themeac.com). Approved credential requests will be available for pick up each day one hour prior to competition.

**Results:** Results will be updated on the conference web site immediately following each day's competitions. Results will also be e-mailed to all MEAC SIDs, head coaches and media outlets at the conclusion of each day.

**Post-Championship Interviews:** Post championship interviews will take place in a designated media area immediately following the championship photos and all-tournament team announcements.

## **Sportsmanship**

The MEAC proposes to promote mutual trust and friendly relations among its members by controlling athletic competition and keeping such competition within the bounds of sound educational activity; by promoting clean sportsmanship; and by developing public appreciation for the educational values that accrue from participation in intercollegiate athletics.

The officers and administrators of the MEAC place a high premium on professionalism, sportsmanship, and ethical conduct. As such, there are significant penalties for any breach of conduct during the course of regular season competition and to an even greater extent during the conduct of MEAC Championships.

For the purposes of general definition, misconduct in a MEAC Championship is any act of dishonesty, unsportsmanlike conduct, unprofessional behavior or breach of law on the part of any recognized University representative, occurring incident to, en route to, from or at the locale of the competition or practice that discredits the event or intercollegiate athletics.

## **Misconduct Incident to Competition**

If the act of misconduct occurs during the competition, under normal circumstances, the individual shall be allowed to complete the competition in which he or she is participating at the time of the incident. An administrative hearing shall be held at the conclusion of the day's competition, during a break in the continuity of the championship when no competition is being conducted, or at the conclusion of the championship. However, if the act of misconduct is so flagrant that it obviously violates the principles of fair play and sportsmanship, the games committee may immediately withdraw the student-athlete or institutional representative from the competition, and conduct the hearing after this action. Other acts of misconduct may be dealt with at the sports committee's convenience.

# 2013 Softball Championship

## **Penalty for Misconduct**

The sports committee (or games committee authorized to act for it) may at its sole discretion impose any one (1) or a combination of the following penalties on an institution or any student-athlete or representative of any institution, guilty of misconduct occurring incident to, en route to, from, or the locale of the competition or practice.

- (A) Public or private reprimand to the individual;
- (B) Disqualification of the individual from further participation in the Conference Championship (s) involved;
- (C) Banishment of the individual from participating in one (1) or more subsequent championships of the sport involved;
- (D) Withholding all or a portion of the institution's share of revenue distribution;
- (E) Banishment of the institution from participation in one (1) or more subsequent championships in which its team in the sport otherwise would be eligible to participate;
- (F) Financial Penalties shall be as follows:
  - a) First Offense - \$500 institutional fine and letter of reprimand
  - b) Second Offense - \$1,000 institutional fine
  - c) Third Offense - \$2,000 institutional fine and one (1) game suspension for the offending coach, institutional staff member and/or student-athletes.

## **Ban from Subsequent Championship**

When a student-athlete or institutional representative is banned from participation in a subsequent championship, such penalty shall be applied to the next Conference Championship events in which the individual's team is involved and the individual otherwise is eligible to participate. In the case of an individual event, the penalty shall be applied to the next Conference Championship event(s), meet(s), or tournament(s) for which the individual qualifies and otherwise is eligible to participate.



# 2013 Softball Championship

## Schedule of Events

### **Wednesday– May 8**

10:00AM – 2:00PM

Practice Schedule  
Site: Sport Complex

5:00 PM

Coaches Administrative Meeting  
(Mandatory Attendance)

Site: Center for Civil Engagement on the campus of Bethune-Cookman University

### **Thursday– May 9**

G# 1 -10:00AM

South 1-Seed vs. North 4-Seed

G# 2 -10:00AM

North 1-Seed vs. South 4-Seed

G# 3 -1:30PM

North 2-Seed vs. South 3-Seed

G# 4 -1:30PM

South 2-Seed vs. North 3-Seed

G# 5 - 4:30PM

Loser Game # 1 vs. Loser Game # 3

G# 6 - 4:30PM

Loser Game # 2 vs. Loser Game # 4

G# 7 - 7:00PM

Winner Game # 1 vs. Winner Game # 3

G# 8 - 7:00PM

Winner Game # 4 vs. Winner Game # 2

### **Friday- May 10**

G# 9 - 10:00AM

Loser Game # 7 vs. Winner Game # 6

G# 10 - 10:00AM

Winner Game # 5 vs. Loser Game # 8

G# 11 - 1:00PM

Winner Game # 7 vs. Winner Game # 8

G# 12 - 3:00PM

Winner Game # 10 vs. Winner Game # 9

G# 13 - 6:00PM

Loser Game # 11 vs. Winner Game # 12

### **Saturday- May 11**

G# 14 - 1:00PM

Championship  
(Winner Game# 11 vs. Winner Game# 13)

3:30PM

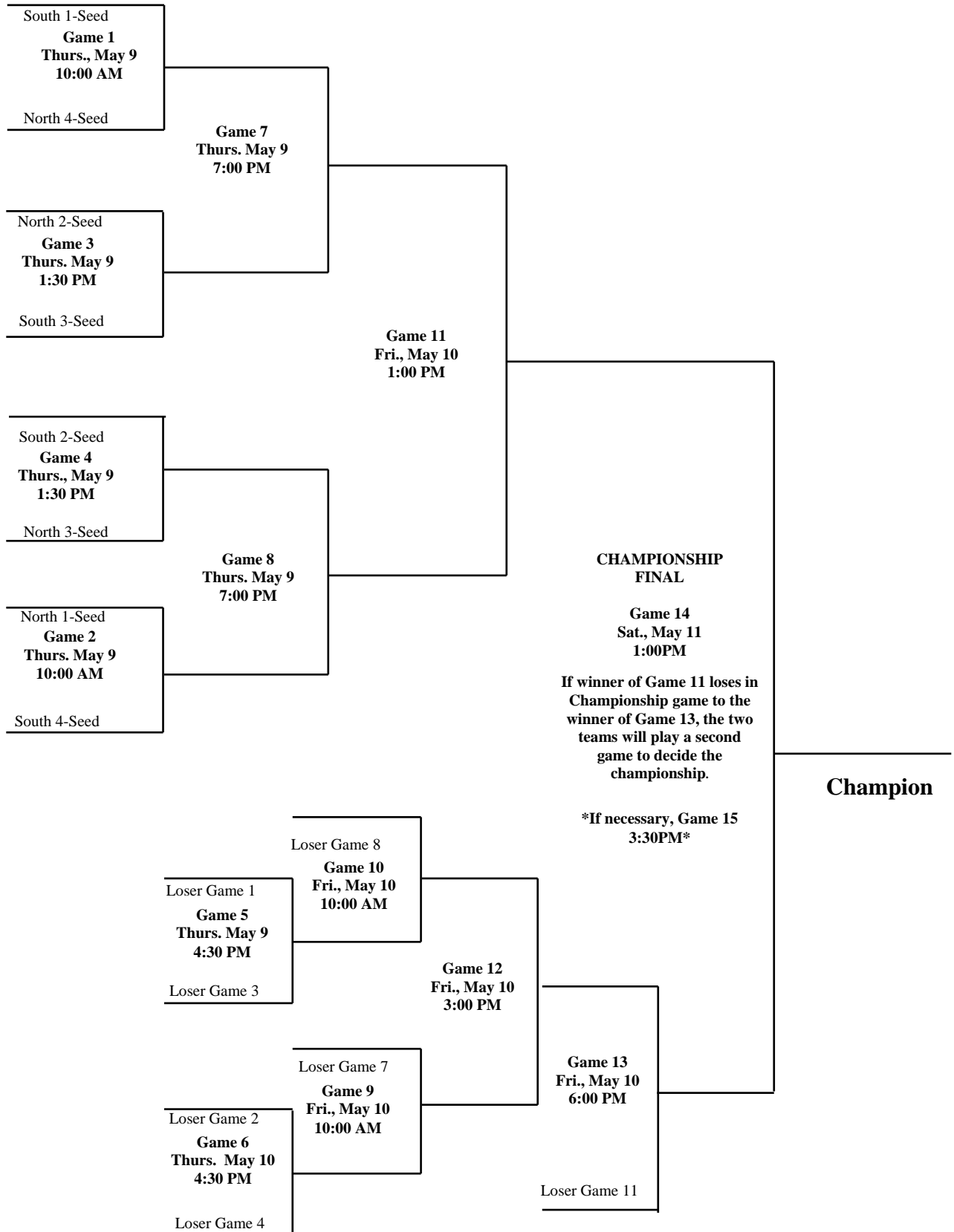
Game #15 (If Necessary)

### **SUNDAY- MAY 12...RAIN DATE**

**\* AWARDS CEREMONY IMMEDIATELY FOLLOWING CHAMPIONSHIP GAME.**

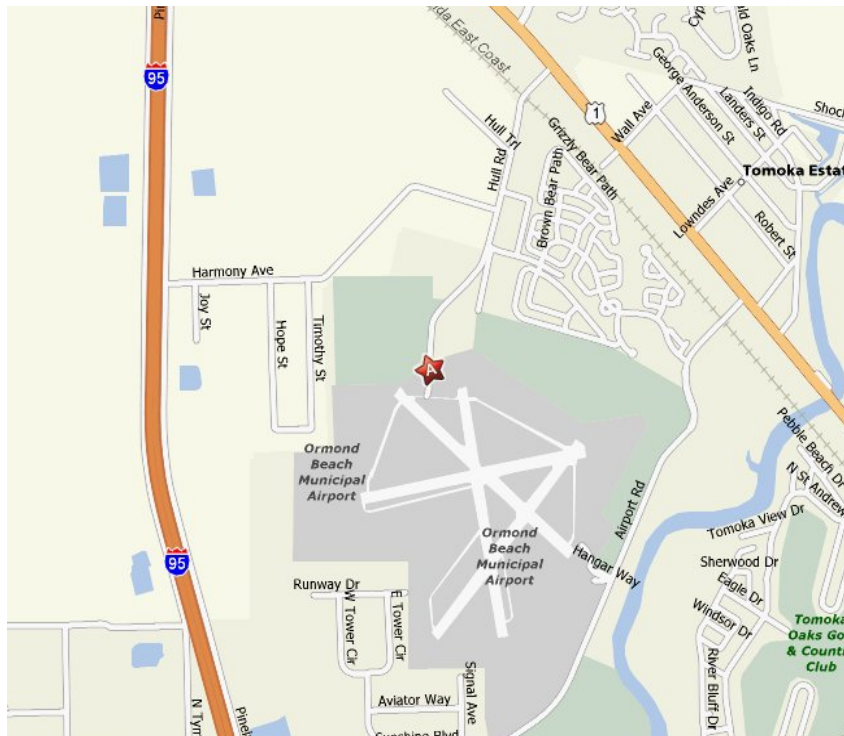
# 2013 Softball Championship

## Championship Bracket



# 2013 **MEAC** Softball Championship

## Driving Directions



**Ormond Beach Sports Complex  
700 Hull Rd.  
Ormond Beach, FL 32174**

### **From points North:**

Take I-95 south through North Carolina, South Carolina, and Georgia, then into Florida. Take the US-1 exit, (exit 273), toward Ormond Beach/Bunnell. Turn slight left to take the ramp toward Ormond Beach./Holly Hill/Daytona Beach. Turn left onto US-1 S/FL-5 S. Turn right onto Hull Rd.

### **From Orlando:**

Take the SR-528-toll exit (exit 1A), toward Cocoa/Kennedy Space Center. Merge onto FL-528. Take exit 16 toward SR-417 Tampa/Orlando. Take the SR-417-toll N exit on the left toward Orlando/Sanford. Merge onto FL-417 toll N/ Central Florida Greenway. Merge onto I-4 E via exit 55A toward Daytona Beach. Then merge onto I-95 N via the exit on the left toward Jacksonville. Take the US-1 exit, (exit 273), toward Ormond Beach/Bunnell. Turn slight left to take the ramp toward Ormond Beach./Holly Hill/Daytona Beach. Turn left onto US-1 S/FL-5 S. Turn right onto Hull Rd.

# 2013 Softball Championship

## Lodging

### **Plaza Resort & Spa**

600 N. Atlantic Avenue  
Daytona Beach, Fl.  
(386) 267-1639

### **Sleep Inn**

170 Williamson Blvd  
Ormond Beach, Fl.  
(386) 673-6030

### **Ramada Inn Speedway**

1798 W. International Speedway Blvd  
Daytona Beach, Fl  
(386) 255-2422

### **Hampton Inn**

1715 West International Speedway Blvd  
Daytona Beach, Fl.  
(386) 257-4030

### **Hilton Garden Inn**

189 Midway Drive  
Daytona Beach, Fl.  
(386) 944-4000

### **Courtyard by Marriott**

1605 Richard Petty Blvd  
Daytona Beach, Fl  
(386) 255-3388

### **Hilton Daytona Beach**

Resort/Ocean Walk Village  
100 North Atlantic Avenue  
Daytona Beach, F  
(386) 254-8200

### **Best Western Castillo Del Sol**

205 S Atlantic Avenue  
Ormond Beach, Fl  
(386) 672-6711

## Restaurants

### **Applebee's Neighborhood Grill**

150 Williamson Blvd  
Ormond Beach, FL

### **IHOP Restaurant**

190 S Atlantic Ave  
Ormond Beach, FL

### **Delcato's Pizza & Italian**

Ste 445, 1474 W Granada Blvd,  
Ormond Beach, FL

### **Boston Market**

1425 W. Granada Blvd.  
Ormond Beach, FL

### **Panera Bread**

250 N Nova Rd.  
Ormond Beach, FL

### **Cracker Barrel**

125 Interchange Blvd  
Ormond Beach, FL

### **Chili's Grill & Bar**

190 Williamson Blvd  
Ormond Beach, FL

### **Subway**

1185 W Granada Blvd # 2  
Ormond Beach, FL

### **Applebee's**

150 Williamson Blvd  
Ormond Beach, FL

### **Outback Steakhouse**

135 E Granada Blvd  
Ormond Beach, FL